

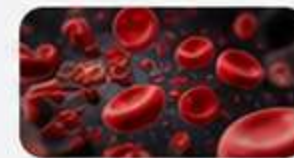
Quinshell 300

Injection

Quinine Dihydrochloride Injection 300 mg/ml



Highly effective **antimalarial** for severe malaria cases.



Acts rapidly to **reduce parasitemia** and control infection.



Helps in the treatment of **chloroquine-resistant malaria**.

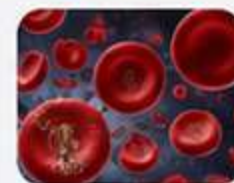


Suitable for **I.M. / I.V.** administration ensuring quick therapeutic action.

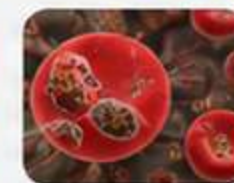


Trusted solution in **hospitals** and critical care settings.

Indications



Severe Malaria



Chloroquine-Resistant Malaria



Malaria with High Fever



Falciparum Malaria



Hospital & ICU Use



Composition :-

Quinine Dihydrochloride 300mg

References:

- World Health Organization. Guidelines for the Treatment of Malaria. 3rd ed. Geneva: WHO; 2015.
- Trissel LA. Handbook on Injectable Drugs. 18th ed. Bethesda, MD: ASHP; 2016.

- Krishna S, Planche T. The role of quinine in the treatment of falciparum malaria. Malar J. 2008;7:1-10.
- Brunton LL, Hilal-Dandan R, Knollmann BC. Goodman & Gilman's Manual of Pharmacology and Therapeutics. 2nd ed. McGraw Hill; 2018.